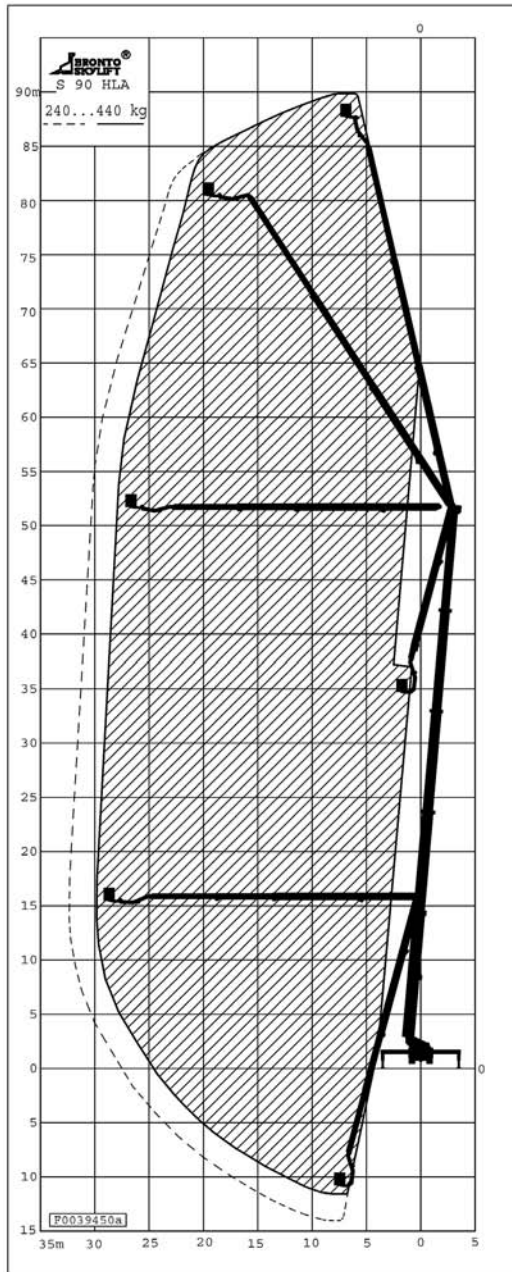


YANNESENISKA[®]

S 90 HLA





Features

Working cage

Wide working cage – turning sector ~ 130 degrees. The maximum working cage load is 440 kg.

Electricity (230V/400V), water and air (max. 200 bar) are also available in the working cage. The electricity can be produced by the machine's own 6,5 kW generator.

The working cage is also equipped with working light and radio. The control unit can be freely positioned anywhere in the working cage to achieve optimum space to work.

Driver



The driver operates the machine and assists the customer with the task. If needed, the driver can operate the machine also from the lower control center. In that case there is an intercom connection between the lower control center and the work cage.

Technical specifications

Working height	90,0 m
Height to working cage floor	88,0 m
Max. working outreach	32,0 m
Safe working load	240 kg / 440 kg
Transport height	4,0 m
Transport length	15,1 m

Transport width	2,55 m
Outrigger width / length	7,0 m / 6,85 m
One-sided	6,0 m / 6,85 m
Working cage	2,2(W) x 0,9(D) x 1,1(H) m
Total gross weight	47200 kg
Max. point load	~25500 kg (255 kN)

Janneniska Oy
Business ID 1067505-2

Tiilipojanlenkki 1, PL 123
01721 VANTAA, Finland

Phone +358 9 8553 8553
Telefax +358 9 8553 8550