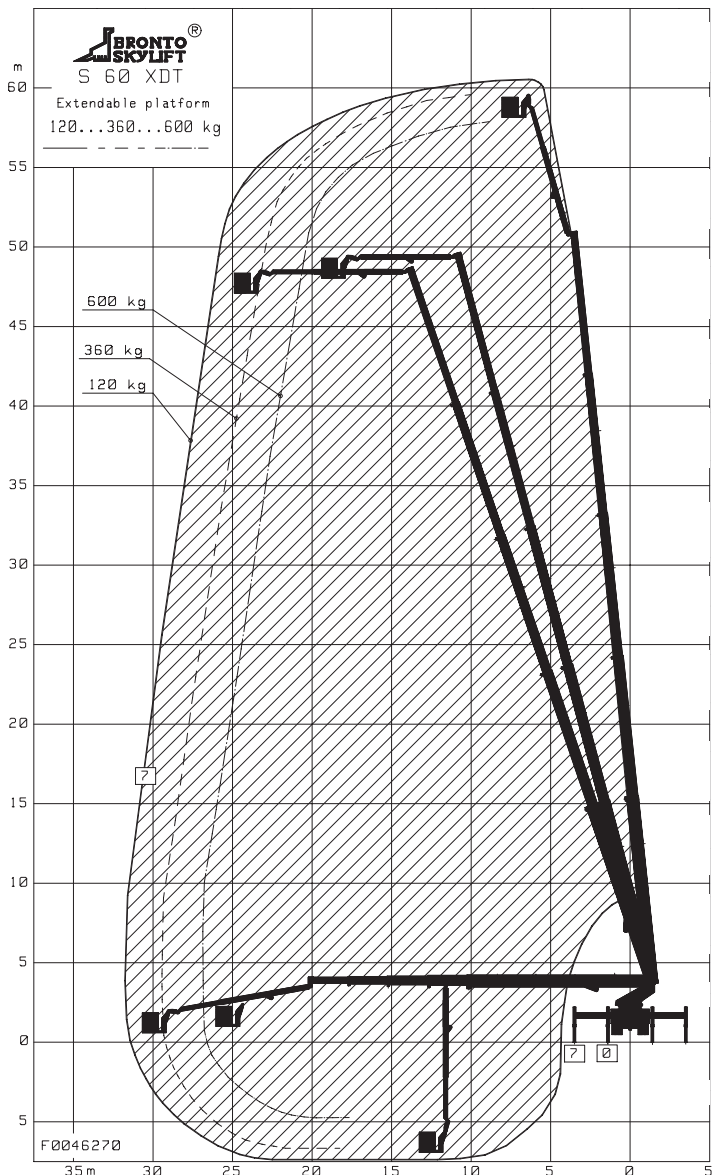




**JANNESEN**

**S 60 XDT**





## Features

### Working cage

Wide working cage - turning sector ~ 180 degrees. The working cage can be extended up to 3,9 meters. The maximum working cage load is 700 kg.

Electricity (230V/400V), water and air (max. 200 bar) are also available in the working cage. The electricity can be produced by the machine's own 6,5 kW generator.

The working cage is also equipped with working light and radio. The control unit can be freely positioned anywhere in the working cage to achieve optimum space to work.

### Driver



The driver operates the machine and assists the customer with the task. If needed, the driver can operate the machine also from the lower control center. In that case there is an intercom connection between the lower control center and the work cage.

### Electronic reach control system

The machine can be stabilized according to the operating space and reach range, so the stabilizers do not take up space unnecessarily, e.g., in narrow places such as sidewalks.

### Electric use

The machine can also be driven with electricity only, to avoid noise and exhaust gases. For this reason the machine can safely and silently be used indoors.

### Telescopic cage boom

Telescopic cage boom is adjustable according to the work environment.

## Technical specifications

Working height	60 m			Transport width	2,55 m
Height to working cage floor	58 m			Outrigger width / length:	
Working outreach				-Normal	7,0 m / 6,85 m
-Narrow working cage	27 m	30 m	32 m	-Narrow	2,8 m / 6,85 m
Safe working load	700 kg	400 kg	120 kg	-One-sided	4,9 m / 6,85 m
-Wide working cage	27 m	29 m	31 m	Working cage	
Safe working load	600 kg	360 kg	120 kg	-Narrow cage	2,4(W) x 1,05(D) x 1,1(H)m
Rotation	continuous			-Wide cage	2,4-3,7(W) x 1,05(D) x 1,1(H)m
Transport height	4,0 m			Total gross weight	32000 kg
Transport length	13,7 m			Max. point load	~25500 kg (255 kN)