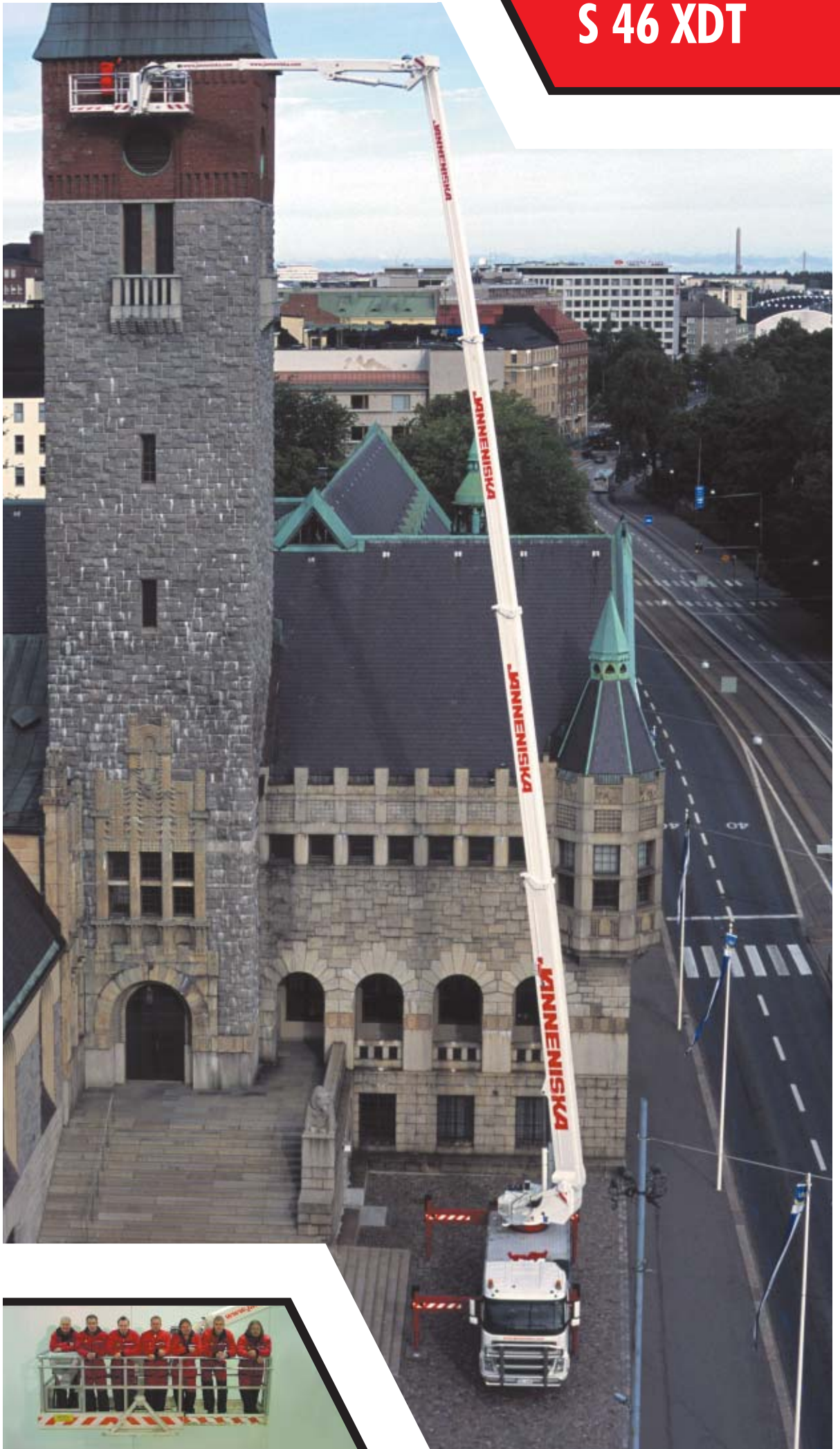
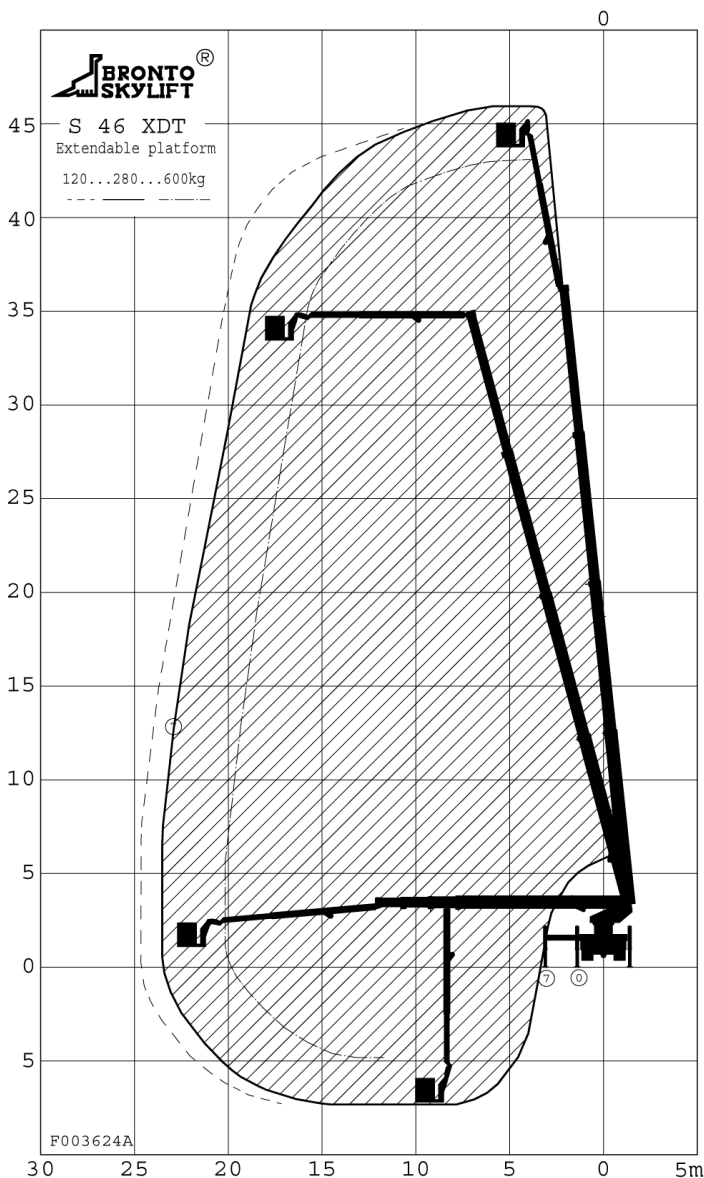




# JANNENISKA

S 46 XDT





## Features

### Working cage

Wide working cage - turning sector ~ 180 degrees. The working cage can be extended up to 3,9 meters. The maximum working cage load is 700 kg.

Electricity (230V/400V), water and air (max. 200 bar) are also available in the working cage. The electricity can be produced by the machine's own 6,5 kW generator.

The working cage is also equipped with working light and radio. The control unit can be freely positioned anywhere in the working cage to achieve optimum space to work.

### Driver



The driver operates the machine and assists the customer with the task. If needed, the driver can operate the machine also from the lower control center. In that case there is an intercom connection between the lower control center and the work cage.

### Electronic reach control system

The machine can be stabilized according to the operating space and reach range, so the stabilizers do not take up space unnecessarily, e.g., in narrow places such as sidewalks.

### Electric use

The machine can also be driven with electricity only, to avoid noise and exhaust gases. For this reason the machine can safely and silently be used indoors.

### Silent pack

The hoisting machine is driven by a separate engine, the Silent Pack, which is much more silent and reliable than the truck's engine and produces much less emissions.

### Telescopic cage boom

Telescopic cage boom is adjustable according to the work environment.

## Technical specifications

Working height	46,0 m			Transport width	2,5 m
Height to working cage floor	44,0 m			Outrigger width / length	
Working outreach				-Normal	6,6 m / 6,9 m
-Narrow working cage	18 m	23 m	26 m	-Narrow	3,4 m / 6,9 m
Safe working load	700 kg	360 kg	120 kg	-One-sided	5,1 m / 6,9 m
-Wide working cage	18 m	23 m	24,5 m	Working cage	
Safe working load	600 kg	280 kg	120 kg	-Narrow cage	2,4(W) x 1,0(D) x 1,1(H)m
Rotation	± 280 degrees			-Wide cage	2,4-3,9(W) x 1,0(D) x 1,1(H)m
Transport height	3,75 m			Total gross weight	20500 kg
Transport length	10,5 m			Max. point load	~15000 kg (150 kN)