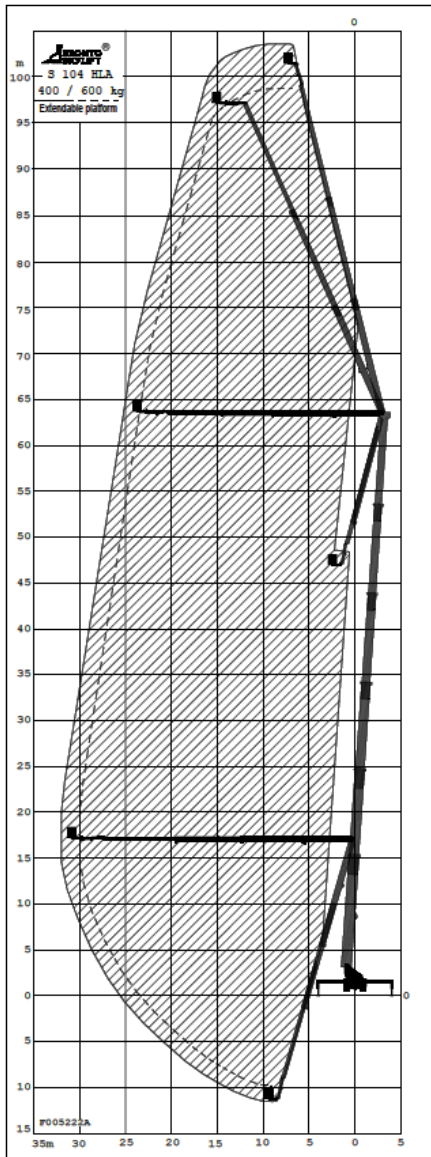


JANNENISKA[®]

S 104 HLA





Features

Working cage

Wide working cage - turning sector ~150 degrees. The maximum working cage load is 600 kg.

Electricity (230V/400V), water and air (max. 200 bar) are also available in the working cage. The electricity can be produced by the machine's own 6,5 kW generators.

The working cage is also equipped with working light and radio. The control unit can be freely positioned anywhere in the working cage to achieve optimum space to work.

Driver



The driver operates the machine and assists the customer with the task. If needed, the driver can operate the machine also from the lower control center. In that case there is an intercom connection between the lower control center and the work cage.

A well trained driver knows what safe lifting of people means in practise. In order to maximize the safety, each of our drivers has passed internationally recognized IPAF training.

Technical specifications

Working height	104,0 m	Transport length	16,6 m
Height to working cage floor	102,0 m	Transport width	2,55 m
Max. working outreach	32 m	Outrigger width/length	8,35 m / 8,75 m
Safe working load	600 kg / 440 kg	Working cage	2,4 (L) x 1,05 (S) x 1,1 (K)m
Rotation	continuous	Total gross weight	62000 kg
Transport height	4,0 m	Max. point load	~31500 kg (315 kN)

Janneniska Oy
Business ID 1067505-2

Tiilipojanlenkki 1, PL 123
01721 VANTAA, Finland

Tel. +358 9 8553 8553
Fax +358 9 8553 8550